

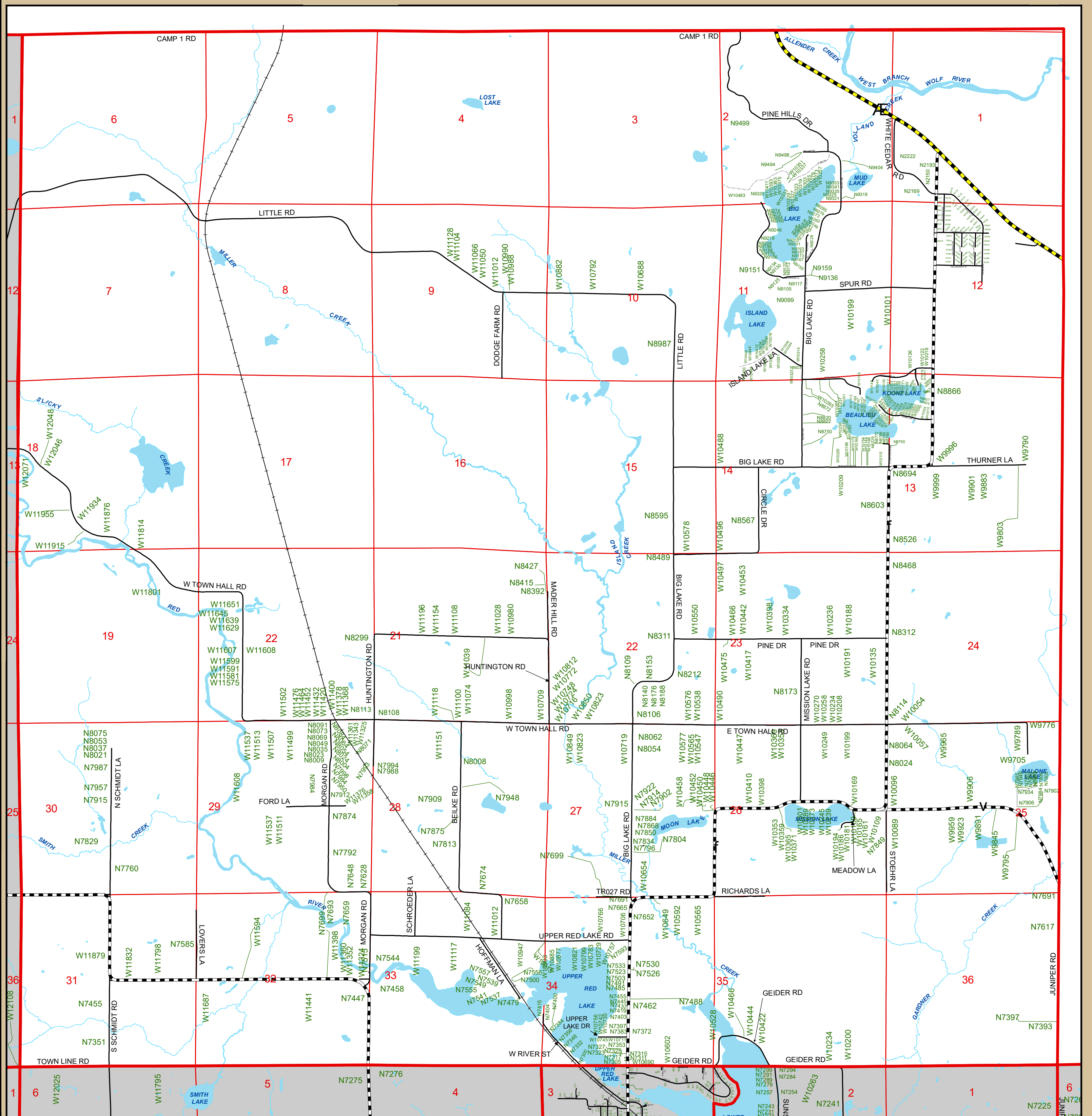
Town of Red Springs

T.28 N R.14 E.

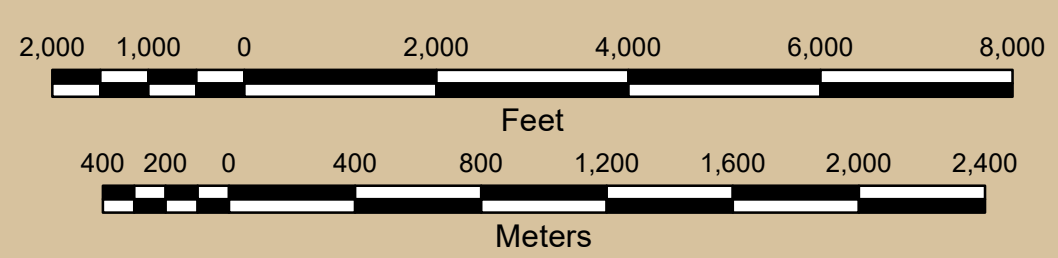
Legend

- Federal/State Highways
- County Highways
- Town/Municipal Roads
- Private Roads
- Railroads
- Waterbodies

W12100 W11700 W11300 W10900 W10500 W10100 W9700



N9700
N9300
N8900
N8500
N8100
N7700
N7300



Information depicted on this map was interpreted from digital orthophotography and various other land records. An attempt was made to accurately represent the information shown hereon, however, recent changes in the physical and cultural landscape may not be represented. This map is intended for planning and general use only. Please refer to the original source documents for detailed information. If you have any questions or discover any discrepancies on this map, please contact the Shawano County Technology Services Dept. 715-526-4614.



Cartography: David Poffinberger, GIS
Shawano County GIS Coordinator/Land Information Officer
Date: 01 March 2018

Town of Red Springs